

# CERTIFICATE OF LOCATION OF GOVERNMENT CORNER

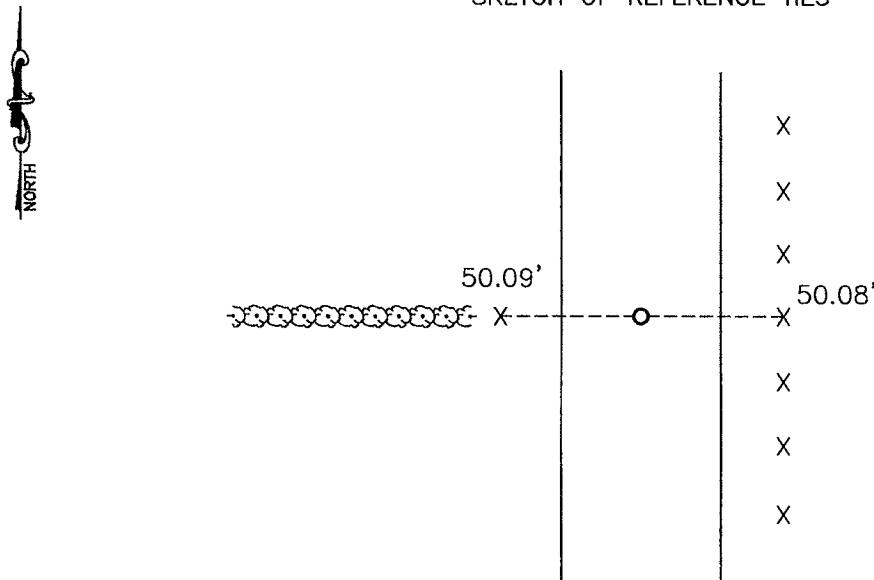
NORTHEAST Corner of Section 17, Township 107, Range 41, 5TH P.M.

STATE OF MINNESOTA, County of MURRAY

At the corner location shown on the sketch:

- On \_\_\_\_\_ found a \_\_\_\_\_
- DATE
- left monument as found,  lowered monument,  removed monument (explain)
- On 04-22-2008 placed a SURVEY SPIKE WITH SEAL #43844
- DATE

### SKETCH OF REFERENCE TIES



Minnesota State Plane Coordinate  
System Murray County Datum  
NAD83 (1996)  
N: 184609.601  
E: 495571.467

Nail and seal in top lone fence post West 50.09'  
Nail and seal in top fence post East 50.08'

Statement of evidence relative to this corner location is on back of page.

I hereby certify that this document and the data contained herein was prepared by me or under my direct supervision.

*James V. Johnson* Jan. 4, 2009  
SIGNATURE DATE

Registration No. 43844

- Land Surveyor,  Professional Engineer  
 County Surveyor,  County Engineer

OFFICE OF THE COUNTY RECORDER  
County of

I hereby certify that this document was filed in the Co. Recorders office at \_\_\_\_\_ .M on the \_\_\_\_\_ day of \_\_\_\_\_ A.D. 20 \_\_\_\_\_

County Recorder *James V. Johnson*  
By \_\_\_\_\_, Deputy

DOCUMENT NO. JUL 10 2009

## Statement of Evidence

In 1861, L. S. M. Fletcher did the original subdivision of the township.

The Murray County Highway Department recorded a hub at the corner.

On April 22, 2008, Bueltel-Moseng Land Surveying searched for corner and found nothing, we did not dig because a total grading project had been done on the road. We set a survey spike with seal #43844 in the center of the road and in line with the hedge line to the west.